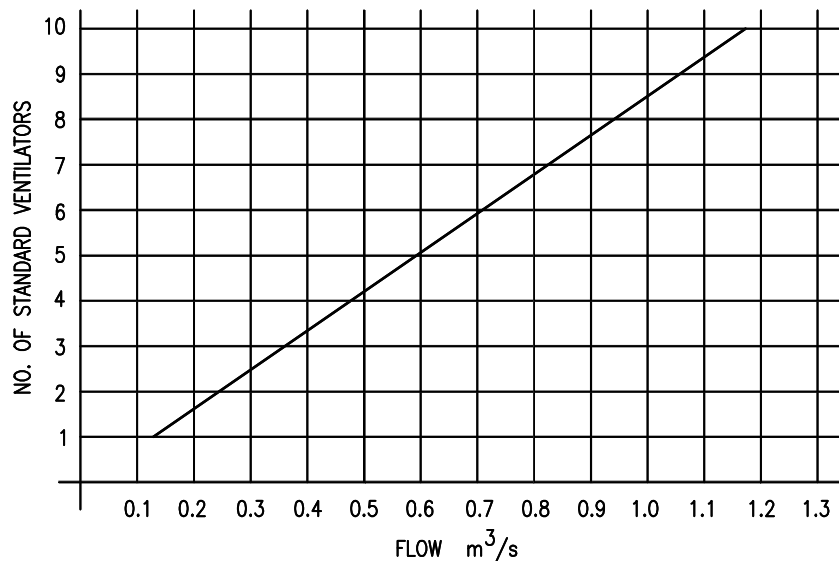
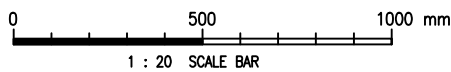


### TYPICAL SECTION THROUGH ROOF MOUNTED VENTILATOR

(DETAILS OTHER THAN THE VENTILATOR ARE FOR INDICATION ONLY, MESH CAGE (FOR FRESH WATER SERVICE RESERVOIRS ONLY) NOT SHOWN FOR CLARITY)



GRAPH OF VENTILATOR REQUIREMENT AGAINST RESERVOIR INFLOW/OUTFLOW



D	BRASS RING AND MESH CAGE	Y.B. LO	8/10/18
C	GENERAL REVISION	S.K. YEUNG	2/1/15
B	RE-FORMATTED TO CSWP	W.K. CHIU	18/7/03
A	GENERAL REVISION	W.K. CHIU	26/6/00
E	HEPA FILTER ADDED	SIMON C.H. LEUNG	16/10/24
REF.	REVISION	APPROVED	DATE

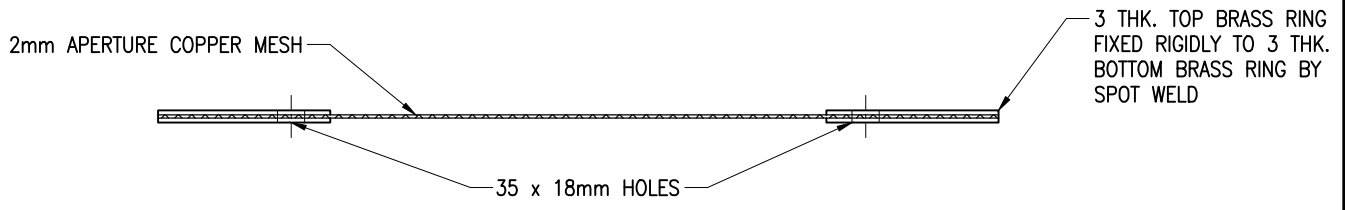
ROOF VENTILATOR



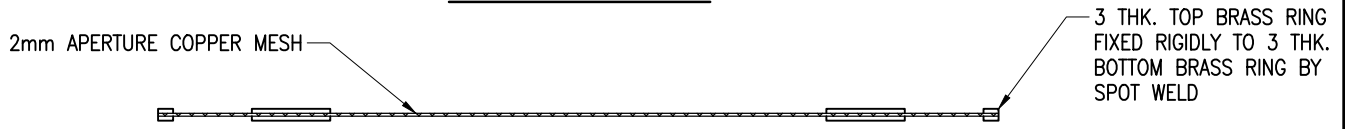
水務署  
Water Supplies Department

APPROVED	G.C. LEE AD/NW	DRAWING NO.	CSWP
DATE	9/6/92	WSD 3.4E	(SHEET 1 OF 7)
SCALE	1 : 20		

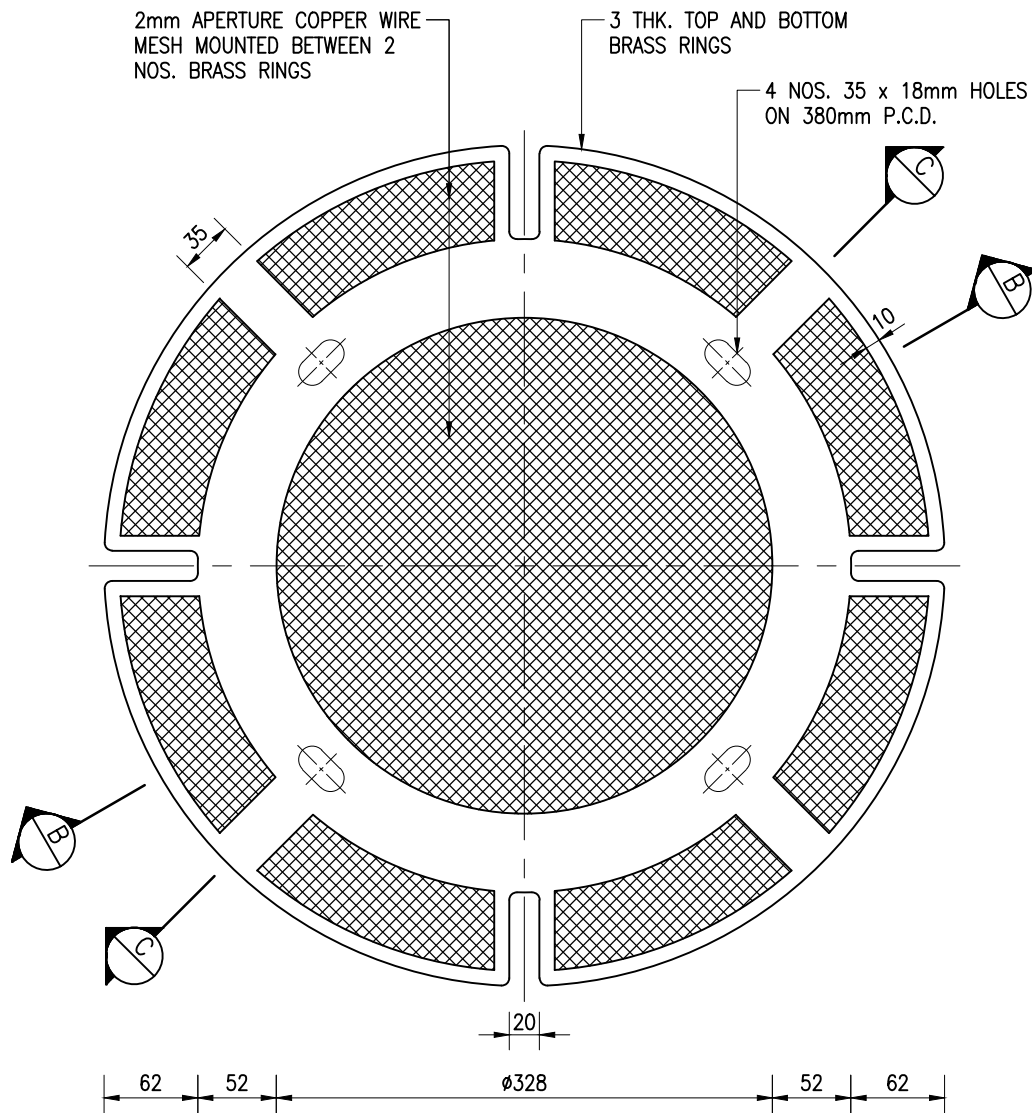




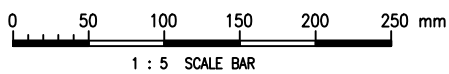
SECTION C - C



SECTION B - B



DETAILS OF BRASS RINGS AND MESH



Cad Ref. : WSD030403-E.dwg

ROOF VENTILATOR



水務署  
Water Supplies Department

APPROVED

G.C. LEE  
AD/NW

DATE

9/6/92

SCALE

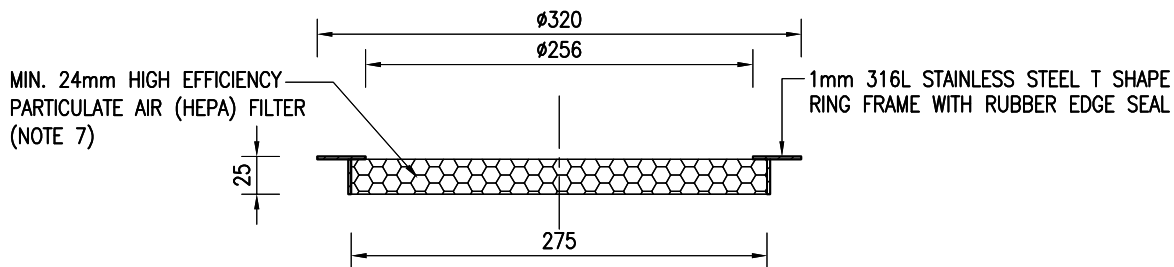
1 : 5

DRAWING NO.

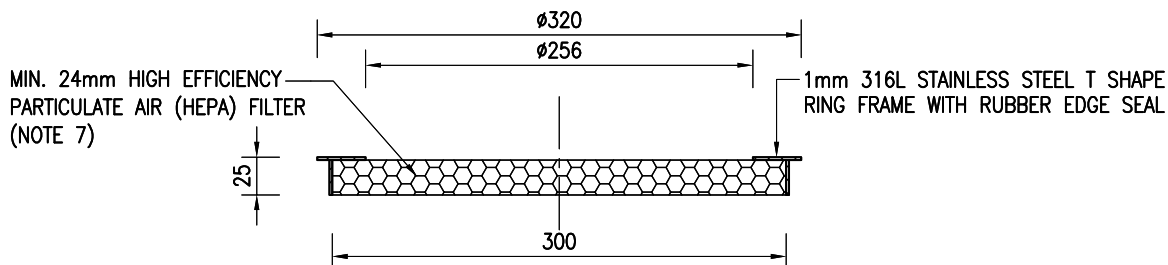
WSD 3.4E

(SHEET 3 OF 7)

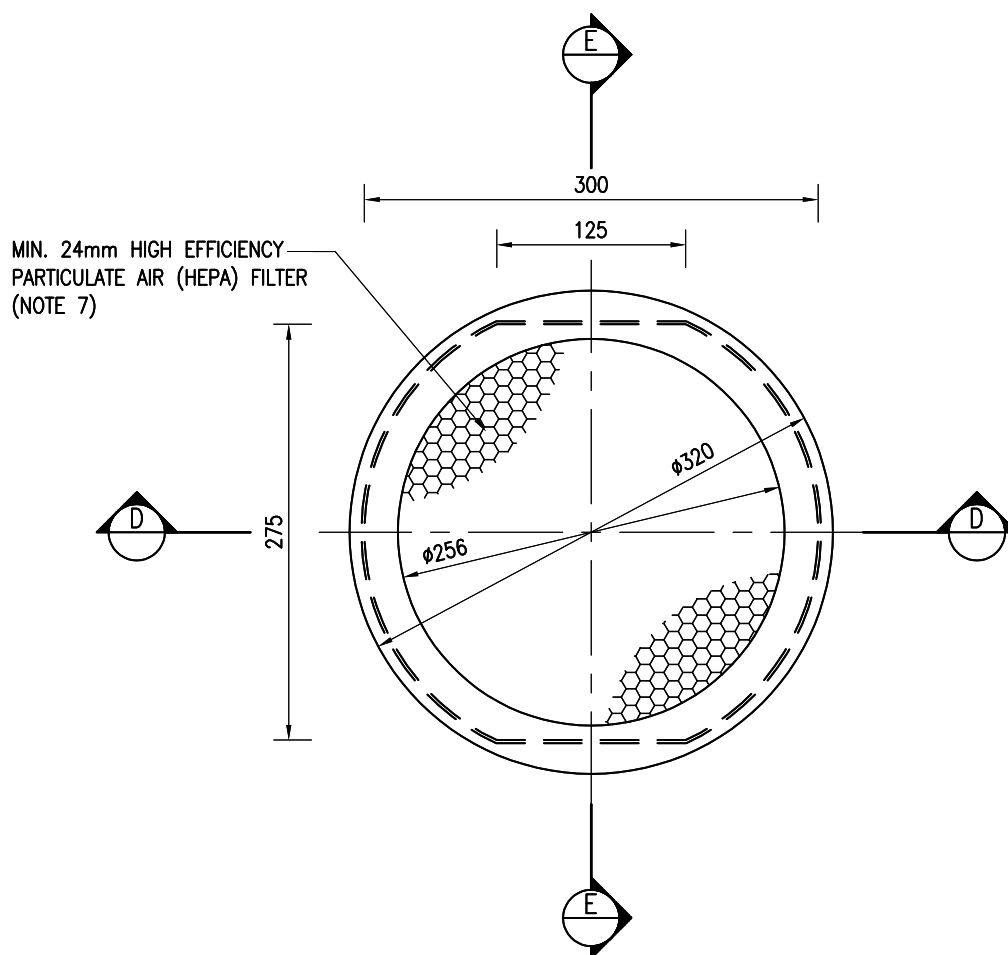
CSWP



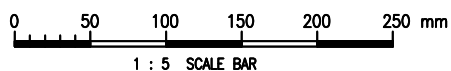
SECTION E - E



SECTION D - D



PLAN OF HIGH EFFICIENCY PARTICULATE AIR (HEPA) FILTER



Cad Ref. : WSD030404-E.dwg

ROOF VENTILATOR



水務署  
Water Supplies Department

APPROVED

G.C. LEE  
AD/NW

DATE

9/6/92

SCALE

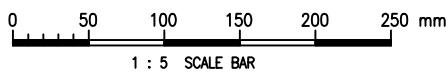
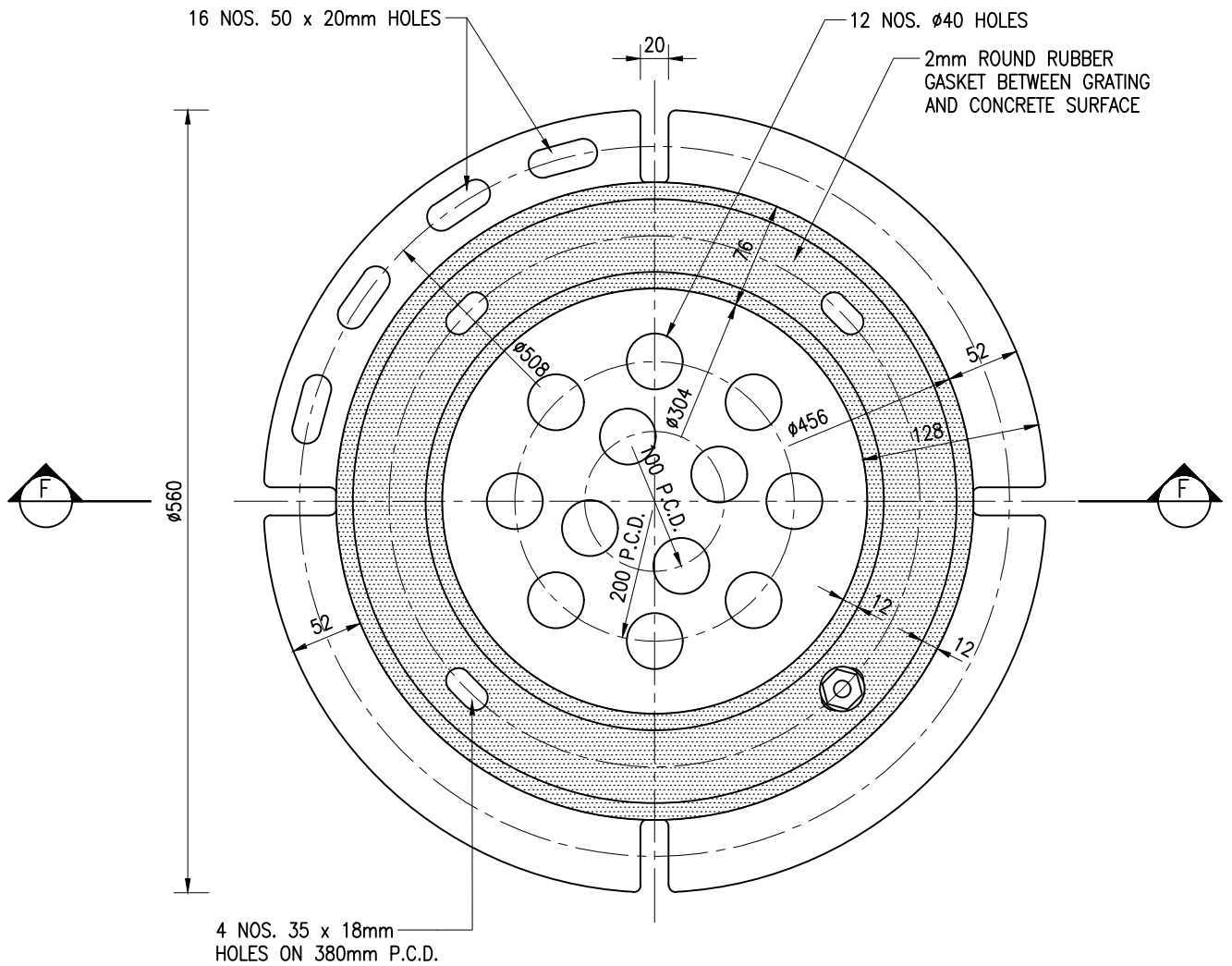
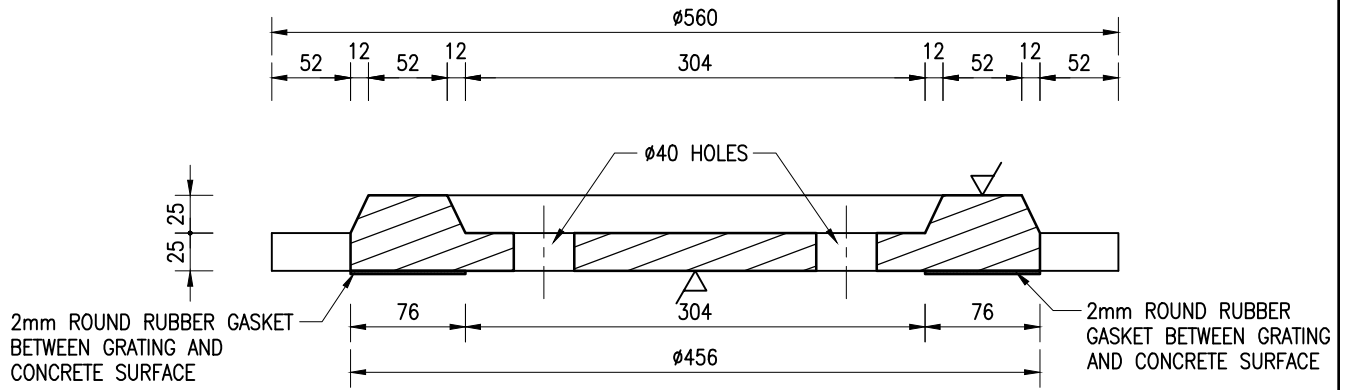
1 : 5

DRAWING NO.

WSD 3.4E

(SHEET 4 OF 7)

CSWP



Cad Ref. : WSD030405-E.dwg

ROOF VENTILATOR



水務署  
Water Supplies Department

APPROVED

G.C. LEE  
AD/NW

DATE

9/6/92

SCALE

1 : 5

DRAWING NO.

WSD 3.4E

(SHEET 5 OF 7)

CSWP

30 x 15 x  $\phi$ 2.2 G.M.S. WIRE MESH  
 WELDED TO INNER SIDE OF 25 x  
 25 x 5 THK. G.M.S. FLAT BAR

4 NOS. 12 DIA. HOLES  
 FOR M10 STEEL ANCHORS

ROOF VENTILATOR  
 (FOR INDICATION ONLY)

25 x 5mm THK. G.M.S. FLAT BAR

**PLAN**

30 x 15 x  $\phi$ 2.2 G.M.S. WIRE MESH  
 WELDED TO INNER SIDE OF 25 x  
 25 x 5 THK. G.M.S. FLAT BAR

800

ROOF VENTILATOR  
 (FOR INDICATION ONLY)

525

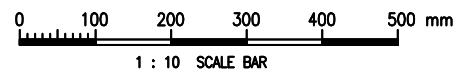
25 x 5mm THK.  
 G.M.S. FLAT BAR

MIN. GRADE 20  
 CONCRETE BASE

**ELEVATION**

4 NOS. M10 STEEL  
 ANCHORS

**MESH CAGE (FOR ROOF VENTILATORS AT  
 FRESH WATER SERVICE RESERVOIR ONLY)**



Cad Ref. : WSD030406-E.dwg

ROOF VENTILATOR



**水務署**  
**Water Supplies Department**

APPROVED

G.C. LEE  
 AD/NW

DRAWING NO.

CSWP

DATE

9/6/92

WSD 3.4E

SCALE

1 : 10

(SHEET 6 OF 7)

NOTES :

1. ALL DIMENSIONS ARE IN MILLIMETRES.
2. EXACT LOCATIONS OF ROOF VENTILATORS SHALL BE AS SHOWN ON CONTRACT DRAWING.
3. MACHINED SURFACES ARE MARKED WITH '▽'.
4. MINIMUM DISTANCE BETWEEN CENTRE LINE OF VENTILATOR AND INNER FACE OF SERVICE RESERVOIR WALL SHALL BE 700mm.
5. SHARP EDGES OF THE C.I. GRATING AND BRASS RING SHALL BE REMOVED.
6. MINIMUM CLEARANCE BETWEEN ROOF VENTILATOR AND MESH CAGE SHALL BE 90mm.
7. THE HIGH EFFICIENCY PARTICULATE AIR (HEPA) FILTER SHALL BE OF CLASS H13 OR ABOVE AND CONFORM IN EVERY RESPECT TO THE REQUIREMENTS OF BS EN 1822.

Cad Ref. : WSD030407-E.dwg

ROOF VENTILATOR



水務署  
Water Supplies Department

APPROVED

G.C. LEE  
AD/NW

DRAWING NO.

CSWP

DATE

9/6/92

WSD 3.4E

SCALE

NOT APPLICABLE

(SHEET 7 OF 7)